



CHELAN COUNTY

DEPARTMENT OF PUBLIC WORKS

316 WASHINGTON STREET
SUITE 402
WENATCHEE, WASHINGTON 98801
TELEPHONE (509) 667-6415

ERIC PIERSON, PE
DIRECTOR/COUNTY ENGINEER

To: River rafting and kayaking companies
From: Chelan County Public Works

March 4, 2020

Re: Impacts of upcoming bridge construction in Cashmere

Starting in the coming weeks, Chelan County will begin a two-year construction project that will replace the West Cashmere Bridge, commonly called the Goodwin Bridge by locals. Construction at times will impact rafters and kayakers on the Wenatchee River.

Demolition of the current bridge may begin as early as April. The project includes the construction of a temporary work access trestle over the river. In-water work will occur from July 15 through Sept. 31 (for two consecutive summers), and temporary pilings, spaced 30 feet apart to support the work platform, will be set in the river. This temporary structure will be in place for the duration of the project.

We do not have a precise construction schedule at this time; however, we plan to have more dates in the coming weeks. The contractor's schedule will be updated weekly on the project's construction page: <https://www.co.chelan.wa.us/public-works/pages/west-cashmere-bridge-replacement-crp-693>

During construction, no river closures are planned. Recreationists are asked to plan for and be on the watch for obstacles in the river at the site of the bridge. Rafters and kayakers may, at times, be directed to one side of the river for safe passage.

We plan to post signs, cautioning recreationists of the construction, at popular put-in areas between Leavenworth and Cashmere. We have also created a list of rafting agencies so we can communicate updates via email.

We are asking that you:

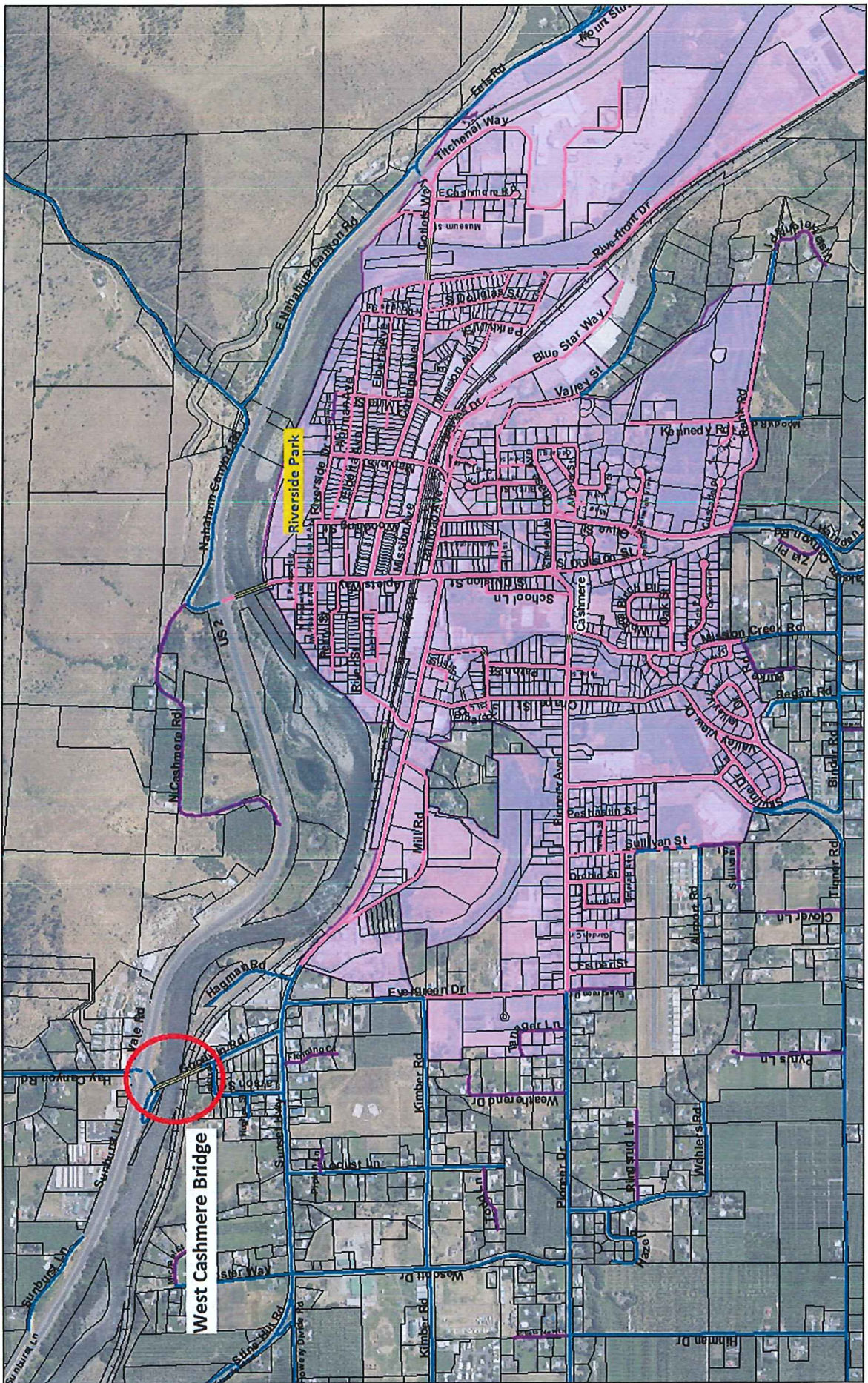
- Keep a close eye on the project's construction page. We expect to post regularly with updates.
- If we need to be communicating with someone else in your business, send that contact information, along with email address, to public information officer Jill FitzSimmons at jill.fitzsimmons@co.chelan.wa.us.
- If you know of any put-in areas that we should be aware of, share that information with Jill as well. Feel free to also share any rafting or kayaking groups that we should be in contact with.
- Share this information with anyone who needs it. While we have the contact information for those rafting businesses in our area, individual rafters and kayakers will be harder to reach.

The West Cashmere Bridge replacement project is a two-year project that, when completed, will strengthen freight mobility for the area and improve emergency responder access for the Cashmere community. The rafting companies and kayakers are an important part of our local economy, and we appreciate your help in reaching out to the river recreationists. Do not hesitate to contact us.

We thank you in advance for your partnership.

Sincerely,

Eric Pierson, Director/County Engineer of Chelan County Public Works



West Cashmere Bridge