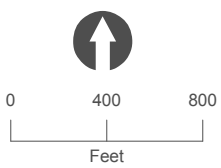
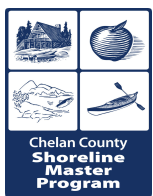


Environment Designations Cashmere 01

All features depicted on this map are approximate. They have not been formally delineated or surveyed and are intended for planning purposes only. Additional site-specific evaluation may be needed to confirm/verify information shown on this map.



June 9, 2014.
Data: WA DNR, WA OFM,
Alliance Consulting Group,
Chelan County.



CCA--Environment Designations

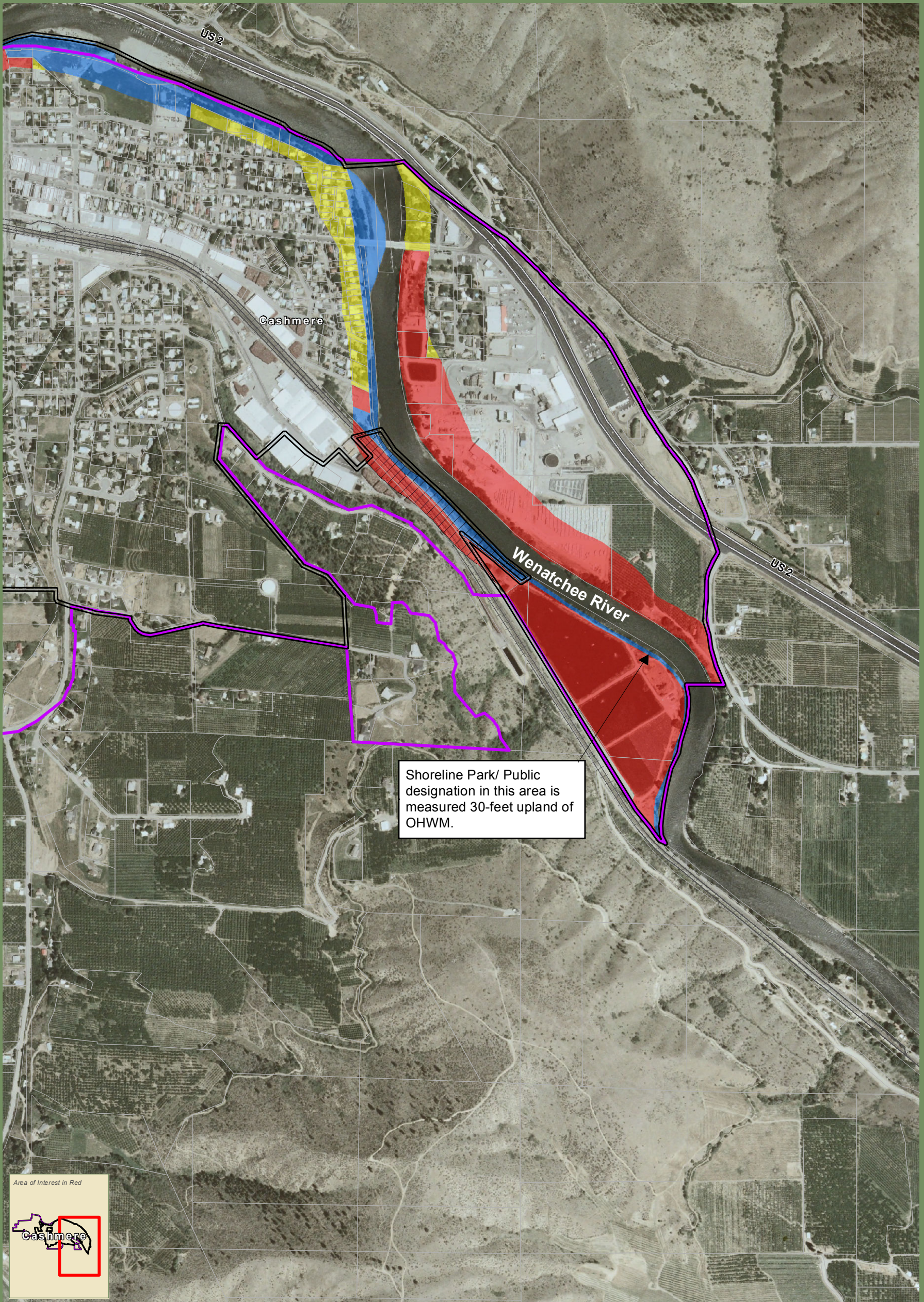
- High Intensity
- Urban Conservancy*
- Shoreline Residential
- Shoreline Park/Public
- UGA Hatching**

- Highways
- Railroads
- Parcels
- City Boundaries
- UGA Boundaries
- WRIA Boundaries

NOTES:

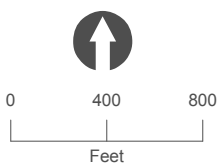
*The boundary of this environment is based on wetland boundaries approximated and/or surveyed by Alliance Consulting Group 2009.

**Hatching indicates shoreline jurisdiction located within the City's Urban Growth Area that is governed by Chelan County. Chelan County will apply the City's Shoreline Master Program standards in these areas.



Environment Designations Cashmere 02

All features depicted on this map are approximate. They have not been formally delineated or surveyed and are intended for planning purposes only. Additional site-specific evaluation may be needed to confirm/verify information shown on this map.



June 9, 2014.
Data: WA DNR, WA OFM,
Alliance Consulting Group,
Chelan County.

CCA--Environment Designations

- High Intensity
- Urban Conservancy*
- Shoreline Residential
- Shoreline Park/Public
- UGA Hatching**

- Highways
- Railroads
- Parcels
- City Boundaries
- UGA Boundaries
- WRIA Boundaries

NOTES:

*The boundary of this environment is based on wetland boundaries approximated and/or surveyed by Alliance Consulting Group 2009.

**Hatching indicates shoreline jurisdiction located within the City's Urban Growth Area that is governed by Chelan County. Chelan County will apply the City's Shoreline Master Program standards in these areas.